

CONDENSER “COND” (optional) FOR RANGE 2500 ÷ 7000 kW

Condensers are available as optional kits for the heat recovery of flue gases.

Medium efficiency recovery:

6÷8% at 100% load, return temp. 60°C

Material: stainless steel, aluminium

BOILER TYPE	CONDENSER TYPE
2200 Low NOx / 2500 STD	COND 2500
3050 Low NOx / 3500 STD	COND 3500
3800 Low NOx / 4500 STD	COND 4500
5000 Low NOx / 5800 STD	COND 5800
6300 Low NOx / 7000 STD	COND 7000

Steel pressurised boilers TERNOX 2S with condenser reach four stars of efficiency ★★★★★

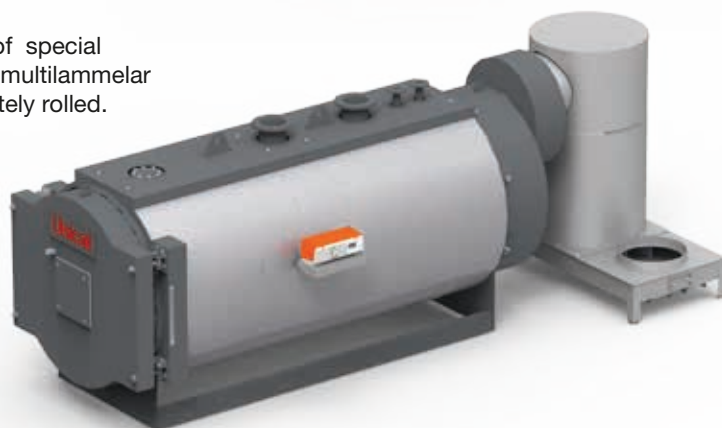
The inlet temperature at the boiler return connection must be > 55°C in any working conditions.



CONSTRUCTION CHARACTERISTICS OF COND

Heat exchanger flue / water, realized in the tube bundle made of special patented stainless steel AISI 316 L tubes, equipped with special multilamellar and progressive aluminum / silicon / magnesium inserts, completely rolled.

- Flanged connections for water inlet and outlet
- Box for connection boiler/chimney
- Connection for condensate drain
- Smoke temperature measuring point



COND 2500		TERNOX 2500 2S STD	TERNOX 2200 2S Low NOx
COMBUSTION CHAMBER INPUT min/max	kW	1951 / 2753	1951 / 2406
RECOVERY (load 100%, Return temperature 60°C) min/max	%	6.15 / 7.85	6.15 / 7.07
EFFICIENCY WITH COND (load 100%, Return temperature 60°C) min/max.	%	98.40 / 98.65	98.40 / 98.52
COND 3500		TERNOX 3500 2S STD	TERNOX 3050 2S Low NOx
COMBUSTION CHAMBER INPUT min/max	kW	2537 / 3848	2537 / 3329
RECOVERY (load 100%, Return temperature 60°C) min/max	%	5.72 / 7.64	5.72 / 6.85
EFFICIENCY WITH COND (load 100%, Return temperature 60°C) min/max.	%	98.35 / 98.59	98.35 / 98.47
COND 4500		TERNOX 4500 2S STD	TERNOX 3800 2S Low NOx
COMBUSTION CHAMBER INPUT min/max	kW	3239 / 4951	3239 / 4144
RECOVERY (load 100%, Return temperature 60°C) min/max	%	5.71 / 7.68	5.71 / 6.76
EFFICIENCY WITH COND (load 100%, Return temperature 60°C) min/max.	%	98.34 / 98.57	98.34 / 98.46
COND 5800		TERNOX 5800 2S STD	TERNOX 5000 2S Low NOx
COMBUSTION CHAMBER INPUT min/max	kW	4324 / 6381	4324 / 5457
RECOVERY (load 100%, Return temperature 60°C) min/max	%	5.78 / 7.44	5.78 / 6.69
EFFICIENCY WITH COND (load 100%, Return temperature 60°C) min/max.	%	98.28 / 98.34	98.28 / 98.31
COND 7000		TERNOX 7000 2S STD	TERNOX 6300 2S Low NOx
COMBUSTION CHAMBER INPUT min/max	kW	5529 / 7705	5529 / 6892
RECOVERY (load 100%, Return temperature 60°C) min/max	%	6.06 / 7.66	6.06 / 6.96
EFFICIENCY WITH COND (load 100%, Return temperature 60°C) min/max.	%	98.31 / 98.51	98.31 / 98.37